

# South Gloucestershire Landscape Character Assessment

## Annex II: Strategic Viewpoints

### South Gloucestershire Council

**Final Draft Report for Adoption Chapter 8**

Prepared by LUC

September 2024



Version	Status	Prepared	Checked	Approved	Date
1	Draft Method and Pilot	E White L Jewitt	K Davies	K Davies	03.04.2023
2	Draft Report	L Jewitt V Kakar	E White	K Davies	16.05.2023
3	Draft Report	E White L Jewitt	E White	K Davies	14.07.2023
4	Final Draft	E White L Jewitt	E White	K Davies	01.11.2023
5	Final Draft (updated following New Local Plan Phase 3 consultation)	L Jewitt	E White	K Davies	12.06.2024
6	Final Draft Report for Adoption	L Jewitt	E White	K Davies	11.09.2024



**Land Use Consultants Limited**

Registered in England. Registered number 2549296. Registered office: 250 Waterloo Road, London SE1 8RD. Printed on 100% recycled paper

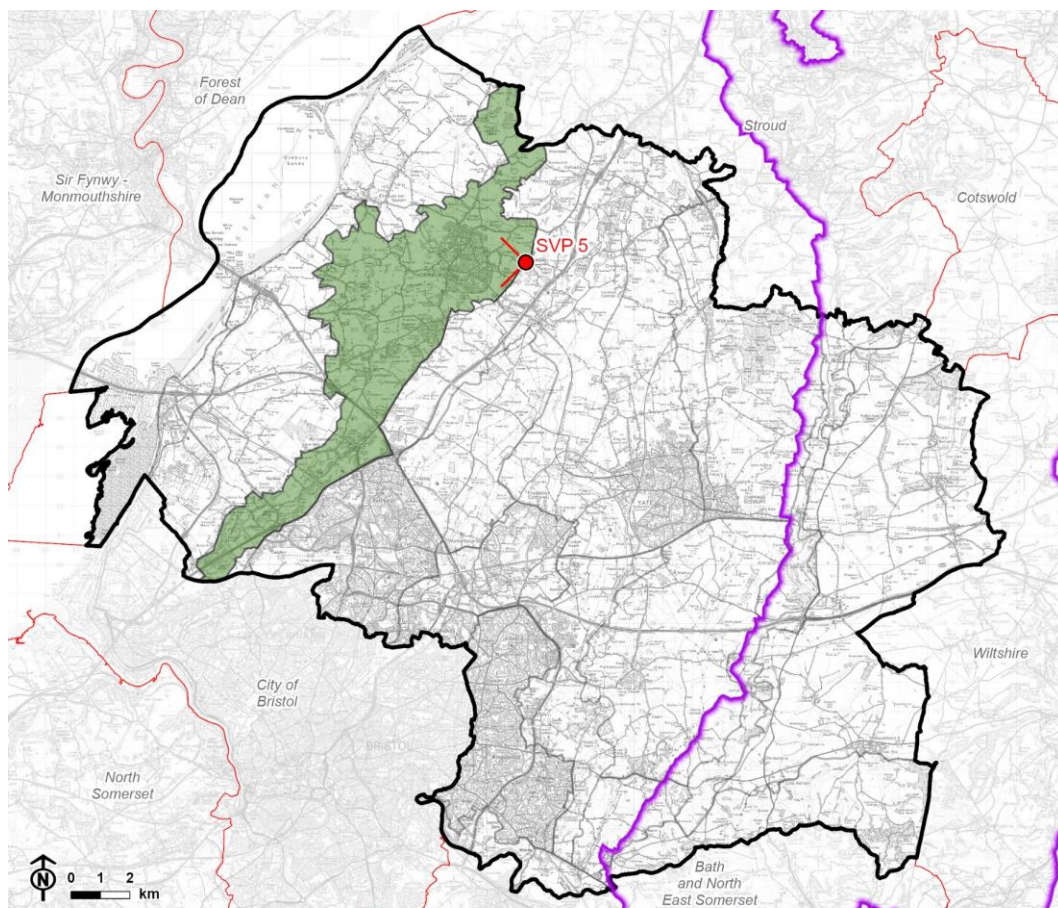
# Contents

<b>Chapter 8</b>	<b>47</b>
Strategic Viewpoint 5: Whitewall Lane (Buckover)	
Characteristics	52
Summary	53

## Chapter 8

# Strategic Viewpoint 5: Whitewall Lane (Buckover)

Figure 8.1: Location of Strategic Viewpoint 5 and landscape character context

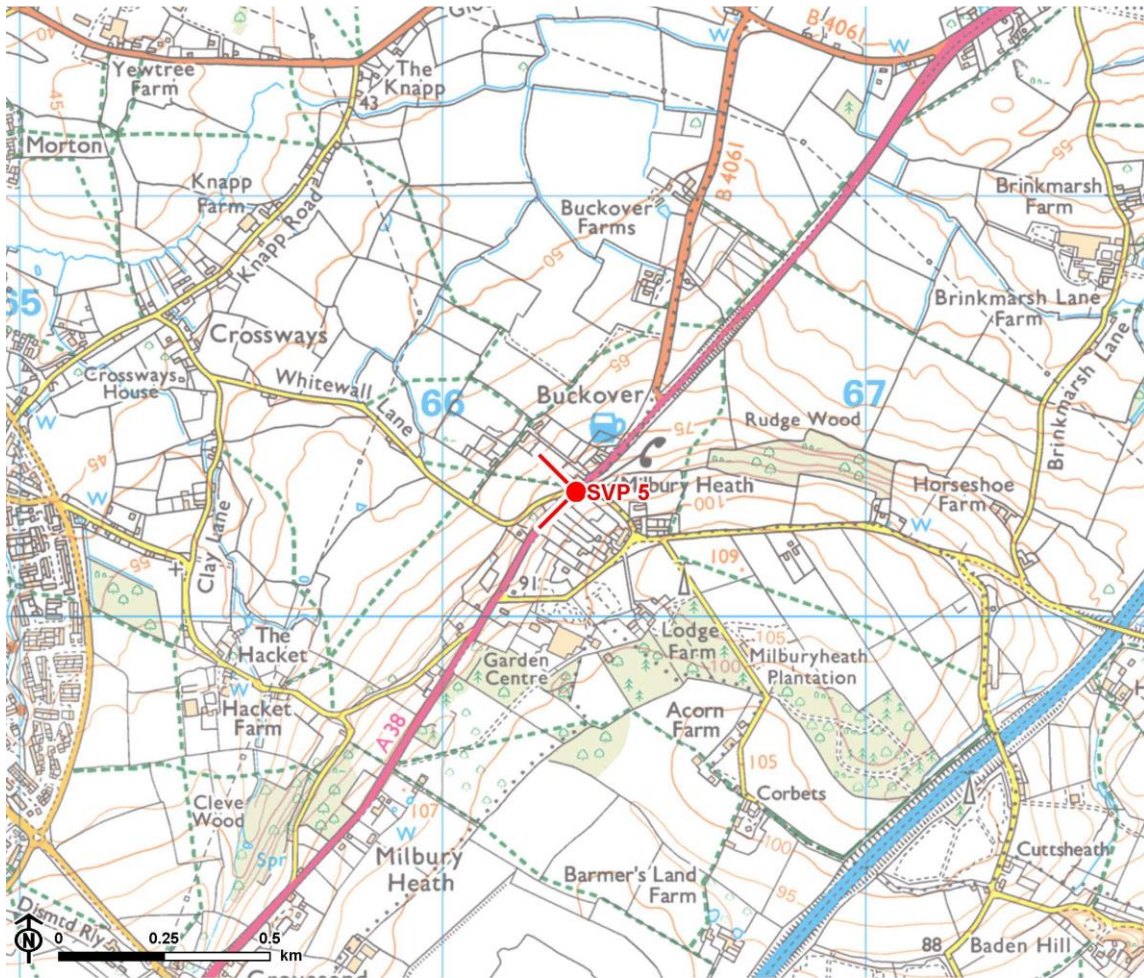


© Natural England copyright © Crown copyright and database rights, Ordnance Survey licence number 100023410 (2024).

CB:HS, EB:shayler\_h LUC 12274\_FiguresUpdates\_MayJune2024 07/06/2024  
Source: LUC, SGDC, NE, OS

-  Council boundary
-  Neighbouring local authority
-  Cotswolds National Landscape (AONB) boundary
-  LCA 18: Severn Ridges
-  Strategic viewpoint and angle

Figure 8.2: Detailed map of the location of Strategic Viewpoint 5



© Natural England. © Historic England. Contains Ordnance Survey data © Crown copyright and database rights, Ordnance Survey licence number 100023410, 2023

 Strategic viewpoint and angle



## Viewpoint Information

**Grid reference:** ST 66300 90302

**View location:** Whitewall Lane/A38 junction at Buckover, east of Thornbury.

**View direction:** View north, west, and south-west across the Thornbury 'bowl' landform and LCA 18: Severn Ridges, and towards LCA 19: Oldbury Levels, and LCA 21: Severn Shoreline and Estuary.

**Relationship with Visually Important Hillside (VIH):** The viewpoint is located along the Severn Ridges VIH.

**Experienced by:** Residents and pedestrians at the top of Whitewall Lane and along the A38 at Buckover, recreational users of public footpath OTH/93/20, and transient views for motorists and cyclists travelling west on Whitewall Lane and along the A38 at Buckover.

Figure 8.3: View Composition of Strategic Viewpoint 5

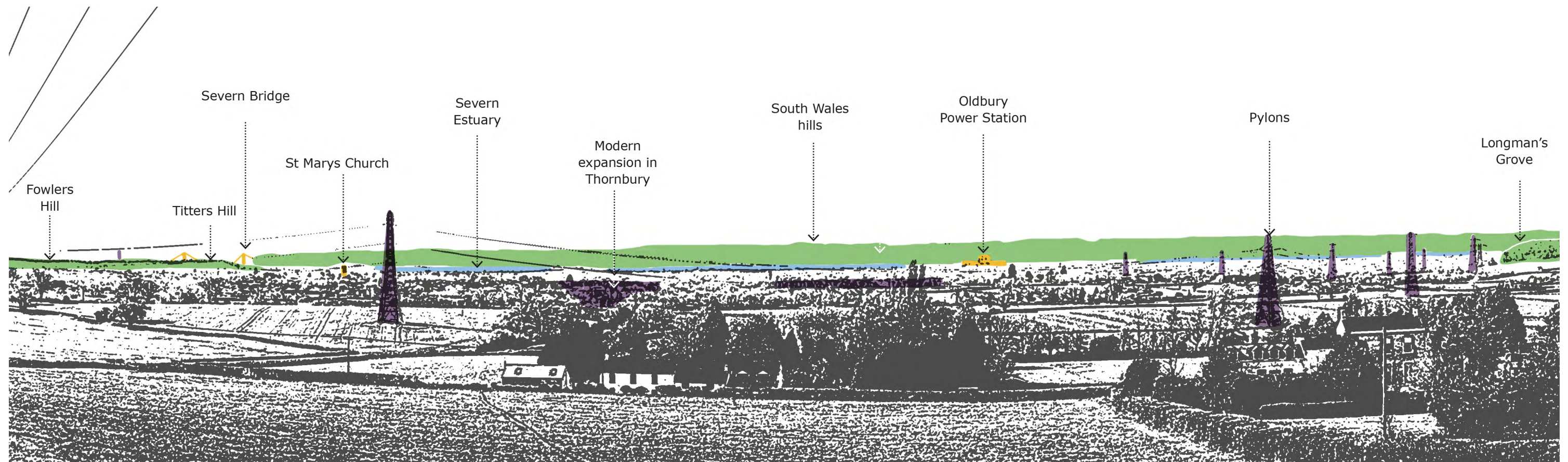


Figure 8.4: Full Panoramic Photograph of Strategic Viewpoint 5



Strategic Viewpoint 5: Whitewall Lane, Thornbury



Strategic Viewpoint 5 (continued)



## Characteristics

### Popularity, access and facilities

- Views from this viewpoint are representative of those described in LCA 18: Severn Ridges, which notes that *“the scarp provides frequent expansive views west over the adjacent flat, low-lying Levels, towards the Severn Estuary and across to South Wales and the Forest of Dean”*.
- The viewpoint is publicly accessible located adjacent to public footpath OTH/93/20 and close to the pavement that runs alongside the A38 at Buckover.

### Quality, value and features of the view

- An elevated viewpoint on the edge of the Severn Ridges VIH that provides sweeping panoramic views (180°) illustrating the relationship between Thornbury within its 'bowl' landform setting, and the transition between the Severn Ridges to the lower-lying 'levels' landscape (characterised by flat, small and regular fields, blocks of woodland, dispersed settlement and pylons). The view extends towards the Severn Estuary, with the distinctive wooded hills of the Wye Valley and South Wales forming a prominent backdrop in views.
- The viewpoint's elevated vantage point provides expansive views over the surrounding rural landscape and scattered farmsteads contribute to the rural character and provide visual features in near and middle-distance views. Fowlers Hill and Titters Hill are notable landscape features which contain the view to the west and wrap around the edge of Thornbury. The wooded hillside of Longmans Grove, part of the Eastwood Park Spur VIH, can be seen in views to the north, gently rising up from the levels.
- The tower of St Mary's Church (Grade I listed) located within the historic core of Thornbury Conservation Area 3km to the west, forms a landmark feature. Oldbury Power Station (located on the edge of the estuary 6km away), also forms a distinctive landmark feature in the view to the north-west. The Grade I listed church tower of St Arilda's Church is located on the top of a pronounced

## Chapter 8 Strategic Viewpoint 5: Whitewall Lane (Buckover)

outlying hill 6km away, although its prominence is limited by surrounding vegetation.

- The towers of the Severn Bridge form a distant landmark feature on the skyline (over 10km away) in views to the south-west.
- Several pylon lines that cross the landscape and along with the recent housing development on the edge of Thornbury, slightly detract from the overall composition of the view.

## Summary

The Whitewall Lane (Buckover) viewpoint is categorised as a SVP as it meets most of the criteria to some extent. It is noted in the South Gloucestershire Landscape Character Assessment as being a natural observation point from which to appreciate the landscape; it is located adjacent to a public footpath; and it provides a panoramic view that demonstrates the relationship between Thornbury within its 'bowl' landform setting, takes in the notable landscape features of the levels, the hills of the Severn Ridges and Eastwood Park Spur, the Severn Estuary and the hills of the Wye Valley and South Wales, and the landmark features of St Mary's Church, Oldbury Power Station and the Severn Bridge.

Report produced by LUC

# Report produced by LUC

## **Bristol**

12th Floor, Colston Tower, Colston Street, Bristol BS1 4XE

0117 929 1997

bristol@landuse.co.uk

## **Cardiff**

16A, 15th Floor, Brunel House, 2 Fitzalan Rd, Cardiff CF24 0EB

0292 032 9006

cardiff@landuse.co.uk

## **Edinburgh**

Atholl Exchange, 6 Canning Street, Edinburgh EH3 8EG

0131 202 1616

edinburgh@landuse.co.uk

## **Glasgow**

37 Otago Street, Glasgow G12 8JJ

0141 334 9595

glasgow@landuse.co.uk

## **London**

250 Waterloo Road, London SE1 8RD

020 7383 5784

london@landuse.co.uk

## **Manchester**

6th Floor, 55 King Street, Manchester M2 4LQ

0161 537 5960

manchester@landuse.co.uk

## **landuse.co.uk**

Landscape Design / Strategic Planning & Assessment

Development Planning / Urban Design & Masterplanning

Environmental Impact Assessment / Landscape Planning & Assessment

Landscape Management / Ecology / Historic Environment / GIS & Visualisation